

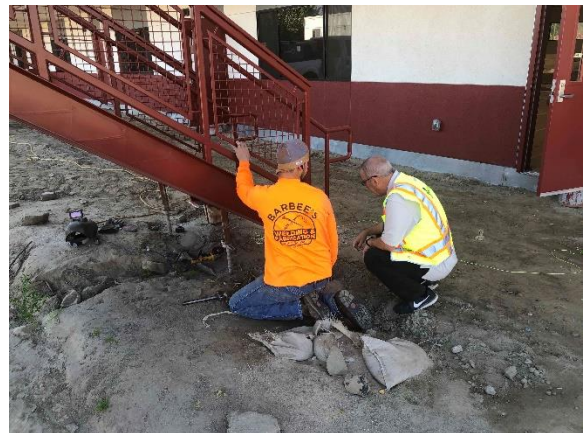
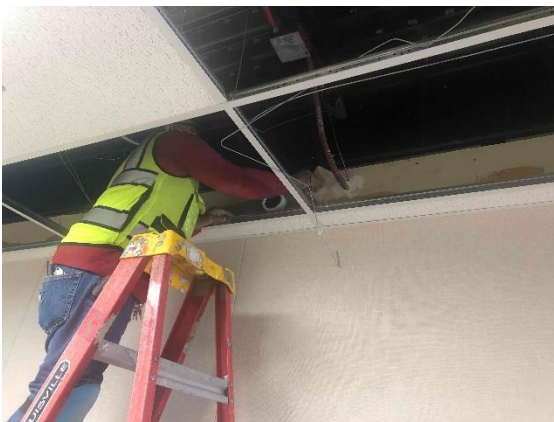


Disney Two Story Modular Project
Update 3/11/22

Dear Disney Parents and the Community,

This week Santa Clarita Concrete surveyed the surroundings of the building and verified the elevations and allowable tolerances of the flatwork to get the concrete pavement work started. Meanwhile, Silver Creek worked on some corrective action items around the stairs and suspended ceiling for the closeup of the building.

Focus for the next couple weeks will be completing classroom finishes, testing and inspection of phase 1 irrigation piping, testing and inspection of the fire sprinkler system, and installation of fence post rebar cages and posts.



We look forward to the start of the concrete flatwork and the fencing installation at the sites east end.

Expect more exciting information coming soon!
Thank you for your support!

Larry Cross
Director of Facilities