

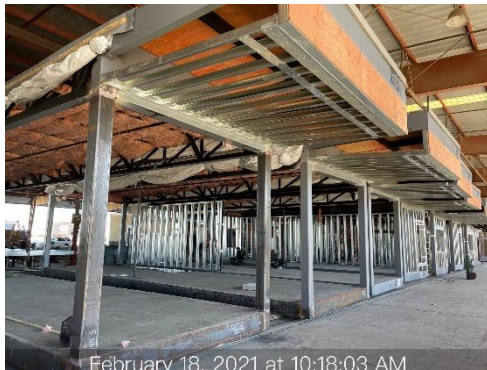


Disney Two Story Modular Project
Update 2/19/21

Dear Disney Parents and the Community,

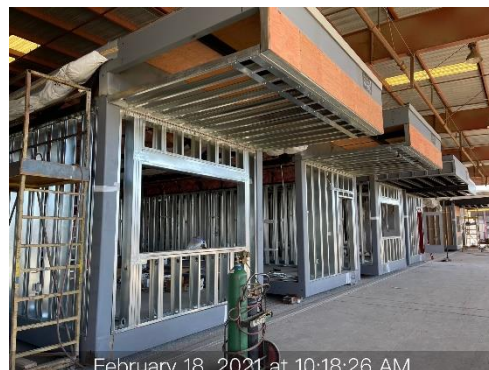
This week we have some very exciting news!

Silver Creek is still working in full speed on the offsite building manufacturing for our Walt Disney Elementary School project.



They have started installation of the insulation at the ceiling and closure of the upper part of the soffit in some building modules.

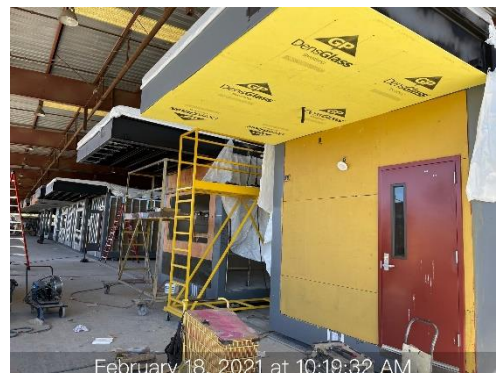
Simultaneously, they are still working on the installation of wall framing and wall openings.





Silver Creek is also installing plywood at the exterior walls, in preparation for the installation of the exterior drywall, which is part of the modular building wall system.

In addition, Silver Creek has already started the closure of the bottom of the soffit area with drywall and installation of the drywall at the walls that have already the plywood installed.



Meanwhile, we had our bid opening today for the site work portion of the project and we had a great turnout.

Currently, our Construction Management consultant is working on reviewing the bid documents to verify the bidders' compliance to the bid and project requirements. Soon, we will issue a Letter of Intent to Award to all contractors that participated in the project bid. Therefore, all participants will become aware of whom the District will award in the upcoming Board Meeting.

Currently, we are looking forward to finding out who are the contractors that will be joining our site team and will get our project on site started.

More information coming soon!
As always, thank you for your support!

Larry Cross
Director of Facilities